

hyperloop

WHERE INNOVATION  
MEETS EXECUTION



Supporting  
#Savewildlife

tracesci.

#Quivertrees

## What we do??

As a cutting-edge print solutions provider, we deliver smart, efficient, and scalable workflows and printing solutions tailored to meet the dynamic needs of modern businesses.

We combine advanced technology with deep industry expertise to ensure every project is executed with precision and professionalism.

Complete Track & Trace Solutions  
Product Authentication  
Supply Chain Transparency using  
Consumer Engagement  
Inkjet Solutions

tracesci.

# Razor6

## High Speed Inkjet Systems

Variable data printing  
1D/2D/QR/Special security codes  
UV/Aqueous Inks  
Security printing application  
Easy to integrate  
24x7 Production support

Print heads	Piezo DOD technology Industrial Printhead
Print Width	Multiple of 54.1 mm (2.1")
Resolution	600x600 DPI, 600x300 DPI
Drop Volume	Binary mode: 5pl/Grey-scale mode: 5-15pl
Compatible inks	UV Curable, Aqueous
Ink Tank	0.5L/1 L
Color Options	Black, Spot, Security Inks
Substrates	Paper, Coated, Plastics, PVC, Cartons, Blister etc
VDP Software	Tracesci RapidPro Software
I/p Data	CSV, Text, Pdf, bmp, jpg, tiff, External data Source (Via IP and port)
Working Environment	20-28°C, Humidity 40-60%, Non Condensing
Electrical	110-240v AC50-60Hz, 10A for inkjet module
Ancillary Equipments at additional cost	Print head guarding, UV dryer, Web cleaner, Web guide, Anti-static bars, Sheet Feeder-Stacker, Reel to reel system, Corona treader,



Watch Razor6 In action

hyperloop

Variable data printing  
High Speed inspection /Vision System  
Automated Digital Slitting





Dual Web Guide



Dual Rewinder



Vision system with Buffer



Digital Slitting



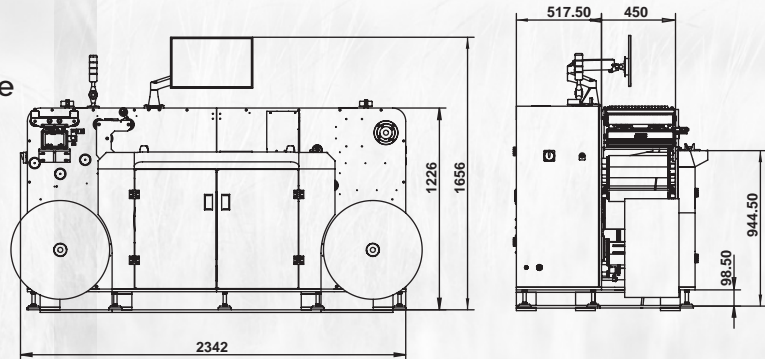
Label Transfer Device



Watch Hyperloop In action

## Technical Specs

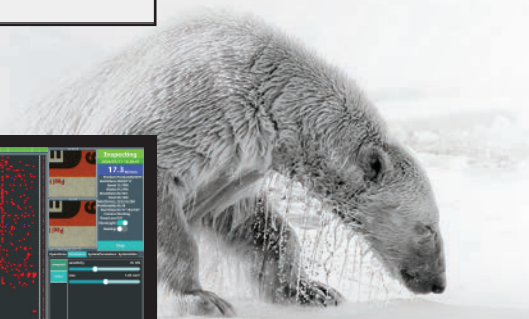
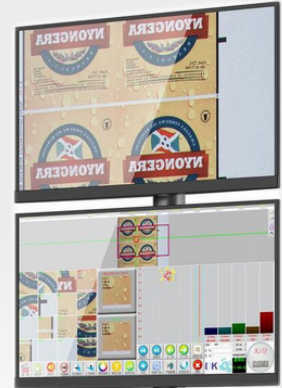
Model	Hyperloop 330 / 450
Model Type	Unwinder, Dual Rewinder, Automated Digital slitting
Web feeding width	Maximum 330 mm / 450 mm , Minimum 20mm
Slitting speed	150 Mtr. /Min (Subject to substrate type), 9 pcs Blade
Web Guide	Dual web guide (1 unit after unwinder + 1 unit before slitting to ensure perfect rewinding)
Running Speed	Upto 200 Mtr/Min (Subject to substrate type)
Positioning	Blade positioning automatic digitally by HMI.
QC Area	Quality Control or defect removal Plate
Max Roll Weight	Approx. 120 Kg
Dimensions	2330x1300x1500 mm
Electrical Requirements	220-240 V, 3KW
Control	Touch Screen Panel



# Vision System

100% Online Inspection System  
 1D/2D/QR/Security codes  
 OCR/ICV  
 Defect detection  
 Inspection reports

Item	Parameter
Horizontal resolution	0.15mm
Vertical resolution	0.15mm
Detection width	10mm-1500mm
Top speed	250m/min
Point defect detection accuracy	defect area >0.2mm <sup>2</sup>
Streak detection accuracy	defect area >0.1mm*5mm
Registration detection accuracy	horizontal >0.15mm vertical >0.25mm



Defects detection for Scratch, Stain, Deink, Foreign Particle, Color, Logo

tracesci.

# Industry Wide Applications



Gone Means Forever. #worthmorealive

**tracesci.**



Printing solutions | Track and Trace

Great things start  
with a  
**hello!**

Tracesci Global Pvt. Ltd.

8B, "Chaitanya Exotica"  
24 Venkatnarayana Road, T. Nagar,  
Chennai - 600017, Tamilnadu, India



Branch Office: Mumbai | Gurugram

+91 999 958 5324  
+91 44 2815 7928 / 7894



[www.tracesci.in](http://www.tracesci.in)  
[wecare@tracesci.in](mailto:wecare@tracesci.in)



Let the Wild Roar, Not Fade. #ProtectWildlife



**tracesci.**